



Documents server Google Drive

Documentation

Summary

I.Prerequisites.....	3
II.Creating a new Google Drive documents server.....	4
III.Server configuration.....	6
III.1Server name.....	7
III.2Google Drive configuration.....	7
IV.Possible actions.....	8
IV.1Downloading.....	8
IV.2Uploading.....	9
IV.3Updating.....	10
IV.3.1Updating a document content.....	10
IV.3.2Renaming.....	10
IV.4Deleting.....	10

I. PREREQUISITES

- A service account to store documents and a .p12 file (see below)
- Follow the tutorial « [google_drive_config_en.pdf](#) » to get your configuration data (service account and .p12 file).

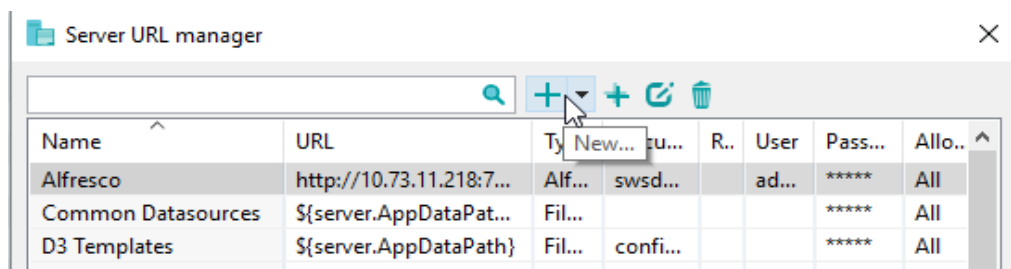
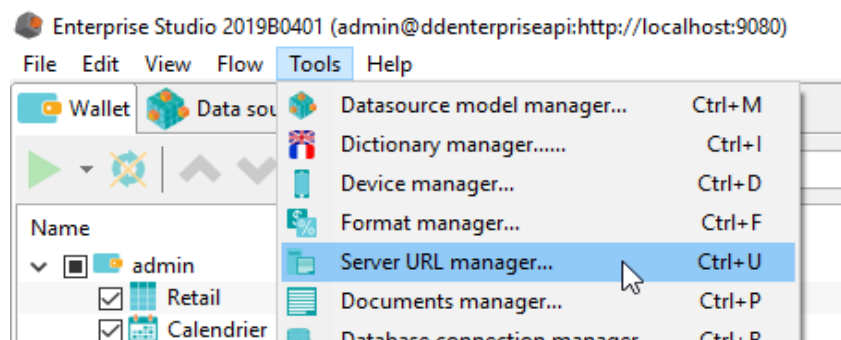
II. CREATING A NEW GOOGLE DRIVE DOCUMENTS SERVER

Digdash Enterprise allows you to get your documents on a Google Drive service account.

- Via the Digdash Studio

To create a new Google Drive document server in the Digdash Studio :

Open Digdash's Enterprise Studio > **Tools** > **Server URL manager...** > **New...**



Screenshot: Creation of a new Google Drive document server

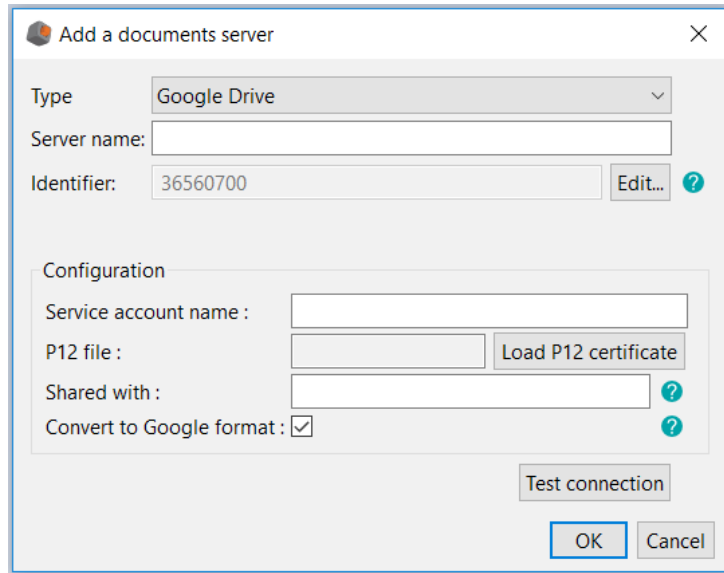
- Via the browser



Screenshot: Creation of a new Google Drive document server via the browser

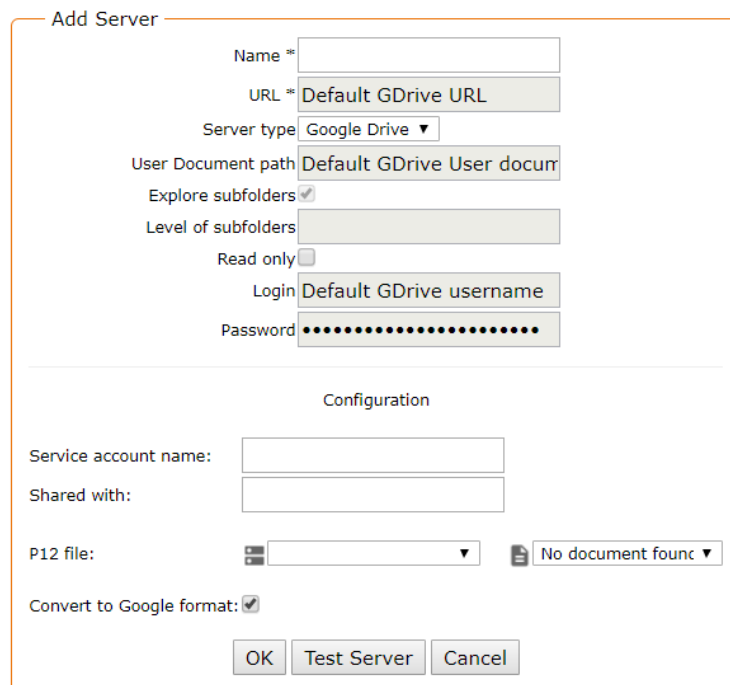
III. SERVER CONFIGURATION

- Via the Digdash Studio



Screenshot: Server configuration for Google Drive via the Studio

- Via the browser



Screenshot: Server configuration for Google Drive via the browser

III.1 Server name

Give a name to your new Google Drive document server.

III.2 Google Drive configuration

Service account name :	It's the account name in an email address form that you got at the creation of the service account in the Google Cloud console.
P12 file :	It's the secret key in a .p12 file form generated and that you downloaded at the creation of the service account in the Google Cloud console.
Shared with :	<p>In this non-mandatory field, you can mention one or multiple email addresses of users you want to share your Google Drive documents with. Those users will receive a notification (via email) everytime a new document is available on the server. They will also be able to see these documents in their own Google Drive account, in the « Shared with me » section.</p> <p>In case of mutiple email addresses, you need to separate them with commas or semicolons.</p>
Convert to Google format:	If this option is selected, documents will always be uploaded in their matching Google format when possible (Cf appendix 1). If the conversion is not possible, the documents will be uploaded in their original format.

Note :

Even if you created the service account while connected to your own Google account, this service account is not related - in any way - to your own Google Drive account.

The service account is a Google account in its own right and has its own Google Drive account, its own Google Calendar, etc.

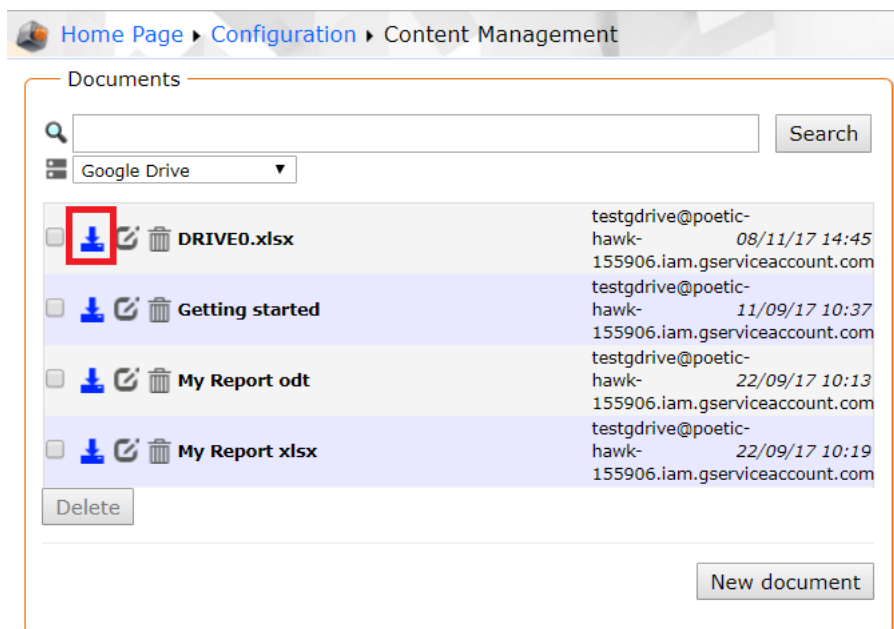
When uploading to the service account, the document will go to the service account's Google Drive and not to the Google Drive of the Google account that was used to create the service account.

NB : There is no Web interface for a service account, which means that you can't authenticate and list which documents have been uploaded. This can only be achieved via a client able to use this service account, like Digidash.

IV. POSSIBLE ACTIONS


Via the browser version of the document manager, you can proceed many actions on your documents on your Google Drive account.

IV.1 Downloading



Screenshot : Downloading a document from Google Drive

It is a basic action. Every connected Digidash user is at least able to read any documents on the server.

This action is possible via this icon: .

IV.2 Uploading

Home Page > Configuration > Content Management

Documents

Search

Google Drive

New document

Servers

Search

Icon	Name	Default URL	Server Type
	Google Drive	Default GDrive URL	Google Drive
	Common Datasources	\${server.AppDataPath}/data...	File System
	Indicator images	\${server.AppDataPath}	File System
	D3 Templates	\${server.AppDataPath}	File System
	FTP localhost	localhost	FTP
	D3 Templates	\${server.AppDataPath}	File System
	Libraries	\${server.AppDataPath}	File System
	SVG files	\${server.AppDataPath}	File System

New Server

Add Document

Server: Google Drive

Choose a local file:

File: Choisissez un fichier | Aucun fichier choisi

Enter a URL:

URL: http://

Name:

Only add the URL link to the Documents server

Custom HTTP Headers

Create a new link:

File: [Dropdown] | No document found

Link:

Name:

Shared users/roles

ID	Name	Read	Write	Remove
----	------	------	-------	--------

Authorize users and roles

Search users: [Input] [OK]

Search roles: [Input] [OK]

[OK] [Cancel]

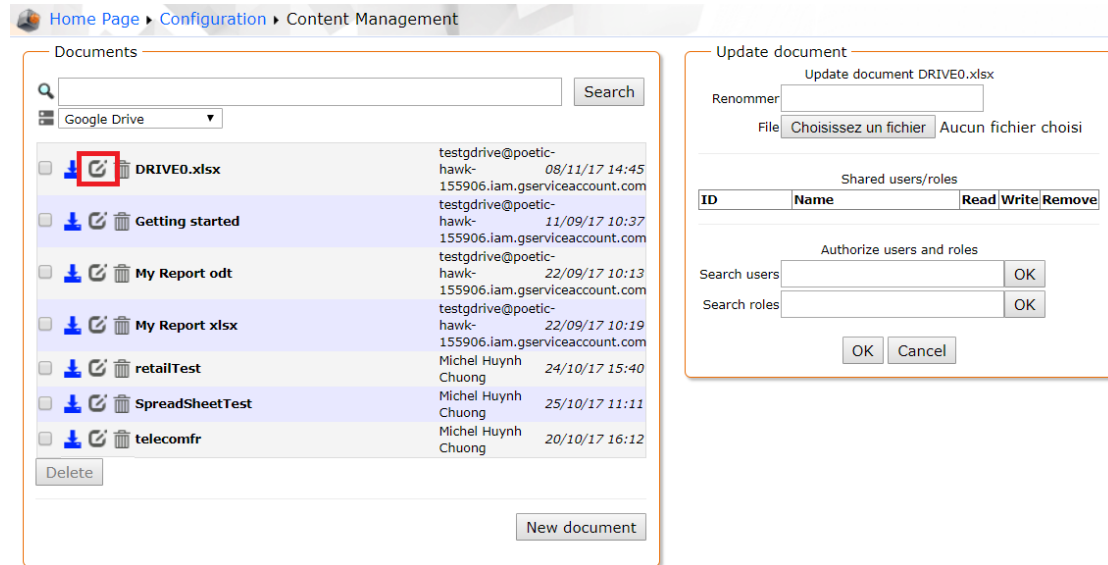
Screenshot: Uploading a document on Google Drive

Note: In Digidash, it is preferable to upload documents with explicit extensions.


Three options are possible:

- **Choose a local file:** click on **Browse...** to select the document to add. Click **OK**. The dialog **Open** shows.
- **Enter a URL:** Enter the URL of your document. If the checkbox **Only add the URL link to the Documents server** is deselected, the content pointed by the URL is downloaded only just once. If the checkbox **Only add the URL link to the Documents server** is selected, the content will be downloaded by the server every time it needs to (for a data source or required by the user). If required by the user, the URL must be reachable by the server. You can also insert user variables in the URL (`${user.uid}`, etc. Cf documentation). You can use a URL starting with « file:// » but in that case, the option **Only add the URL link to the Documents server** is selected by default. This kind of URL should refer to a file on the disk of the server. The link name must end with the extension of the file (.csv, .html, etc.).
- **Create a new link:** Create a new link to a document on the server. The pointed file is the last document (alphabetically) corresponding to the link. For example, a link like “document*.csv” will refer to the last CSV file starting with “document”.

IV.3 Updating




Screenshot : Updating a document on Google Drive

This action is possible via this icon: .

Here are the possible actions:

IV.3.1 Updating a document content

You are able to update the content of an existing document selecting another file on their file system.

 This unique action will not alter the document name.


IV.3.2 Renaming

You are able to rename a document. You will specify in the text field the new name without any extension (it remains the same).

IV.4 Deleting

You are able to delete one or several existing documents in the directory specified during the server configuration.

If the user wants to delete more than one document, they can do it thanks to the check boxes.

This action is possible via this icon: .

APPENDIX 1 : Possible conversions

Type of file	Google Format	
doc	Google Docs	
docx		
odt		
html		
rtf		
txt		
jpg		
png		
gif		
bmp		
pdf		
xls		Google Sheets
xlsx		
ods		
csv		
tsv		
ppt	Google Slides	
pptx		
odp		